

PERSPECTIVES

OPINION

Looking for inspiration: new perspectives on respiratory rhythm

Jack L. Feldman and Christopher A. Del Negro

Abstract | Recent experiments *in vivo* and *in vitro* have advanced our understanding of the sites and mechanisms involved in mammalian respiratory rhythm generation. Here we evaluate and interpret the new evidence for two separate brainstem respiratory oscillators and for the essential role of emergent network properties in rhythm generation. Lesion studies suggest that respiratory cell death might explain morbidity and mortality associated with neurodegenerative disorders and ageing.

Breathing is a deceptively simple yet remarkable behaviour in vertebrates that regulates gas exchange in the lungs to support metabolism, regulate pH and, in non-primate mammals, regulate temperature (BOX 1). Breathing persists from birth until death. In a human lifespan of 80 years, respiratory movements repeat more than 5×10^8 times. Breathing at rest remains relatively unchanged throughout healthy adulthood, but breathing rates are exceptionally labile to acute challenges such as changes in posture, exercise and sleep. At rest, a 70 kg adult human male uses ~250 ml O_2 per minute. Because the body's reservoir of O_2 is only ~1 litre, and as low levels of blood O_2 for more than a few minutes can cause irreversible brain damage, the need to breathe continuously is obvious. During sustained movements driven by large muscles, such as when chasing prey or fleeing predators, O_2 consumption increases significantly. Even during a more modest movement such as walking, human O_2 consumption triples to ~800 ml per minute. Given the limited O_2 reservoir, breathing must rapidly increase to satisfy the metabolic demands of sustained movement and to maintain consciousness. Breathing also adapts readily to accommodate slower changes associated with development, disease, pregnancy and ageing.

Lung and cardiac pathologies are the main causes of breathing disorders, but dysfunctions relating to the neural control of breathing also have a significant effect on public health. Such dysfunctions include

sleep apnoea, and possibly **sudden infant death syndrome** (SIDS)¹. Several genetic disorders manifest in abnormal respiration, including Rett syndrome² and **congenital central hypoventilation syndrome** (CCHS, also known as Ondine's curse)^{3,4}. Death due to central respiratory arrest during sleep is probably common in neurodegenerative diseases such as amyotrophic lateral sclerosis (ALS), **Parkinson's disease** and multiple systems atrophy (MSA), and perhaps in the elderly (see below).

“ We posit that there are two distinct respiratory rhythm generators in the medulla, which are normally coupled... ”

What are the mechanisms that underlie the generation and modulation of breathing in humans? What perturbations to these mechanisms cause respiratory pathologies? With the possible and rare exception of single gene deletions that produce a respiratory phenotype in humans⁵ (such as the methyl CpG-binding protein 2 (MeCP2) mutation that causes **Rett syndrome**²), these questions cannot be addressed directly in humans for ethical and technical reasons — for example, significant limitations associated with brainstem anatomy and perfusion impede the use of functional imaging technologies⁶.

Our modern understanding of the neural mechanisms of breathing originates from experiments in anaesthetized or decerebrate dogs, cats and rabbits⁷. More recently, especially after the demonstration that the neonatal rat brainstem and spinal cord isolated *in vitro*, dubbed the *en bloc* preparation, could generate a rhythmic respiratory-related motor pattern⁸, rodents became the model of choice. Two subsequent experimental discoveries, addressing the site and mechanism of rhythm generation, fuelled most of the research we report here. First, respiratory rhythm persists in thin brainstem slices that encompass a small region of the ventrolateral medulla named the preBötzinger Complex^{9,10} (preBötC) (BOX 2c,d). These experiments first identified the preBötC and led to the hypothesis that the preBötC was the source of respiratory rhythm^{9–12}. Second, rhythm persists *en bloc*^{13,14} and in slices^{13–17} after the attenuation of postsynaptic inhibition. This led to the hypothesis that intrinsically rhythmic pacemaker neurons drive the respiratory rhythm^{10–12,14,18}.

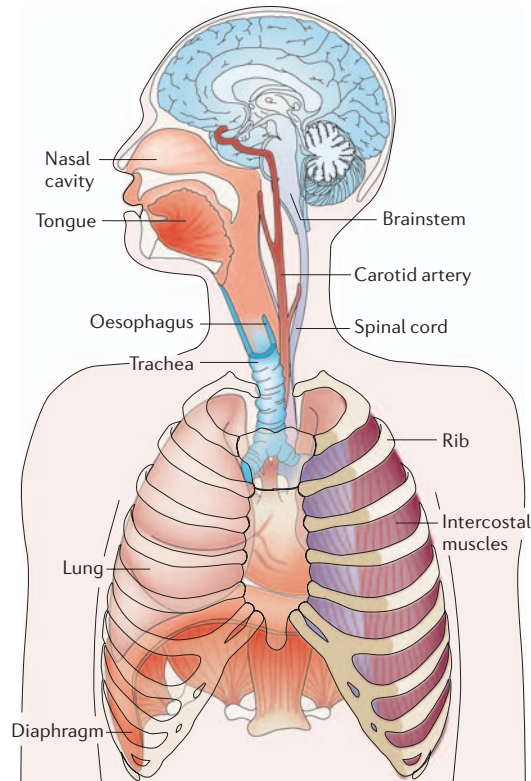
Here we evaluate the evidence for these hypotheses in relation to the sites and mechanism(s) of rhythmogenesis, and we propose modifications of both on the basis of recent developments. We posit that there are two distinct respiratory rhythm generators (RRGs) in the medulla¹⁹, which are normally coupled: the preBötC, discovered in 1990 (REFS 9, 10), and the retrotrapezoid nucleus (RTN). The latter was discovered in 1989 (REF. 20) and postulated as a candidate for a RRG in 1990 (REF. 9), but was largely ignored as such until 2003–2005 when a related, apparently overlapping and perhaps identical, newly named region, the parafacial respiratory group (pFRG), was proposed as a RRG²¹. It is not yet known whether the RTN and pFRG are anatomically and functionally distinct, and here we use the designation RTN/pFRG to refer to this general region (BOX 2). We suggest that in adult mammals at rest the rhythm is dominated by the preBötC²². Furthermore, we propose that emergent properties of the preBötC engender a network oscillator in which bursting-pacemaker neurons can be embedded but are not obligatory for rhythm generation.

Box 1 | Anatomy and physiology of the respiratory system

When the thoracic cavity expands during inspiration by contraction of the diaphragm and external intercostal muscles, the lungs expand and air flows in at a rate dependent on airway resistance. Expiration is often passive, especially at rest, as the lungs and ribcage recoil to their equilibrium positions.

There are two classes of motor output, which involve pump muscles and resistance muscles. The lung expands during inspiration owing to contraction of the diaphragm (a pump muscle), a dome-like sheet of muscle that separates the thorax from the abdomen. The diaphragm is the principal inspiratory muscle and is unique to mammals. Skeletal muscles of the mouth, nose and throat, including the tongue and glottis, and smooth muscles of the bronchi modulate airway resistance.

In breathing, the brain links sensory information to motor output. Respiratory rhythm must be transformed into an energy efficient pattern of movement appropriate to the ongoing metabolic demand. The chemosensory organs that monitor blood O₂ and CO₂ levels are located primarily in the carotid bodies and in the brainstem. The carotid bodies are located at the bifurcation of the carotid arteries and produce signals that relate mostly to O₂ levels in arterial blood. In the absence of functioning carotid bodies, ventilation becomes mostly sensitive to changes in CO₂ and pH, which are generally accepted to be sensed in many regions of the brainstem, including the preBöttinger Complex and the ventral medullary surface²³. Most recently, Guyenet and colleagues^{26,28} presented compelling evidence to suggest that the original view, that central chemoreception is the province of the ventral medullary surface, is correct, and that the retrotrapezoid nucleus (BOX 2) is a critical site.



oscillators that might rely on the preBötC. Third, genetic deletion of the transcription factor *MafB* (*v-maf* musculoaponeurotic fibrosarcoma oncogene homologue B) results in markedly abnormal breathing patterns in neonatal mice⁴⁹. The principal neuroanatomical disturbance in these mice is reported to be a marked reduction in the number of preBötC neurons. Fourth, an essentially normal inspiratory motor pattern persists after transection of the brainstem just rostral to the preBötC in rats, which removes all suprapontine and pontine respiratory-related circuits (and the RTN/pFRG)²². These data contradict long-standing claims that such transections irreversibly eliminate normal breathing and instead cause gasping^{50,51}; these assertions have long influenced views of the brainstem organization of breathing circuits, and particularly the role of the pons⁵², which now requires re-evaluation.

Recent evidence suggests that a second site contributes to the rhythm of breathing. Neuronal population imaging of *en bloc* preparations reveals a cluster of rhythmically active neurons concentrated in the RTN/pFRG²¹ (FIG. 1). Most of these neurons are categorized as pre-inspiratory (pre-I) for their tendency to discharge before the inspiratory burst. (This nomenclature is potentially misleading because pre-I neurons are actively inhibited during inspiration and then typically rebound to discharge again during the post-inspiratory/early-expiratory phase.) Rhythmically active RTN/pFRG pre-I neurons are proposed to interact with preBötC neurons as a coupled oscillator system to regulate the rhythm of the intact mammal^{19,22,53} (BOX 2a,d; FIG. 1). Unlike the preBötC, the RTN/pFRG has not yet been captured in rhythmically active slice preparations *in vitro*, but this may just be a matter of time.

Functional evidence for a second oscillator comes from experiments exploiting the differences in the pharmacological properties of most neurons in the preBötC compared with those in the RTN/pFRG. The μ -opiate agonist DAMGO (d-Ala(2),NMePhe(4),Gly-ol(5)enkephalin) hyperpolarizes a subset of preBötC inspiratory neurons¹⁶. At concentrations that eliminate motor output in *en bloc* preparations (>500 nM), DAMGO abolishes the synaptic drive to most inspiratory neurons of the ventral respiratory column, including many in the preBötC, but appears to have no direct postsynaptic effects on pre-I neurons, and does not affect their ability to oscillate in synchrony⁵⁴. If the rhythm in pre-I neurons does not change in the presence of opiates, even though preBötC neurons are depressed,

The restricted scope of this article precludes discussion of topics essential for a comprehensive understanding of the neurobiology of breathing, including chemoreception^{23–28}, pontine sites and their contributions to respiratory behaviours²⁹, expiratory pattern generation *in vivo*^{7,30,31}, airway protective reflexes, development^{32–38}, plasticity^{23,39}, and the role of glutamate, GABA (γ -aminobutyric acid), glycine, noradrenaline, serotonin, acetylcholine, and other neurotransmitters and modulators in shaping respiratory pattern¹¹, and in pathologies affecting respiratory rhythm (for an example, see REF. 40).

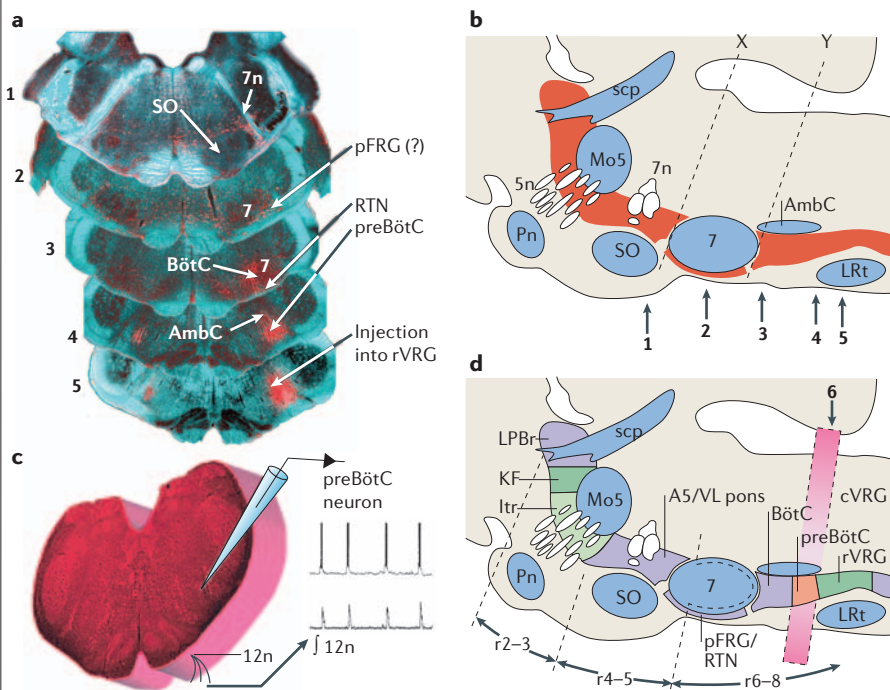
Distinct respiratory oscillators

The nervous system could ensure that breathing remains robust and reliable by various means including multiple oscillator sites and multiple mechanisms for oscillation⁴¹, as well as through synaptic inhibition, which also serves in the shaping of the breathing

pattern^{13,17,42–45}. Here, we address the idea of multiple oscillators.

Inspiratory and expiratory rhythms. The idea that a dominant rhythm generator is localized in the preBötC is supported by several observations. First, medullary slices containing the preBötC generate a rhythm that is indistinguishable from the respiratory-related rhythm *en bloc*, although this pattern differs from that seen *in vivo*, which is probably due largely to the absence of peripheral and descending inputs, and low temperature (*in vitro* preparations are often studied at room temperature) and other environmental differences^{31,46,47}. Second, almost complete bilateral lesion of a subclass of preBötC neurons in intact awake adult rats induces an irreversible pathological, ataxic breathing pattern that is quite different from normal breathing⁴⁸. These data confirm the importance of the preBötC, but do not exclude the presence of other respiratory

Box 2 | Respiratory regions in lateral rhombencephalon



The preBötzinger Complex (preBötC) and retrotrapezoid nucleus/parafacial respiratory group (RTN/pFRG) are part of a continuous ventral respiratory column (VRC). Caudally within this column, excitatory inspiratory and expiratory premotor neurons are concentrated in regions termed the rostral (rVRG) and caudal (cVRG) ventral respiratory groups, respectively. The preBötC contains rhythm-generating interneurons. The BötC contains expiratory inhibitory interneurons. The RTN/pFRG contains interneurons that might generate expiratory rhythms. Panel **a** shows transverse sections (1–5) of adult rat brainstem with retrogradely labelled neurons (red) following FluoroGold injection in the rostral VRG (at 5). Arrows in panel **b** show the approximate levels of sections 1–5. Panel **c** shows a transverse slice encompassing the preBötC that is used for *in vitro* experiments. The brainstem location of the slice shown in panel **c** is indicated by the red bar in panel **d** (6). Panels **b** and **d** represent sagittal sections of rat brainstem depicting retrograde labelling (**b**) after tracer injection in the preBötC, and the functionally defined respiratory sites (**d**). Cutting planes X and Y in panel **b** indicate levels where more rostral brainstem removal does not interfere with expiratory motor output (X) or eliminates expiratory motor output (Y). Panel **d** shows how adult rhombencephalic regions map to their embryonic rhombomeres (black arrows). Rhombomeres 4–5 (r4–5) are shown to include the facial nucleus (7) because it originates in r4–5 but migrates developmentally to r6. 5n, trigeminal nerve; 7n, facial nerve; 12n, hypoglossal nerve; A5, A5 noradrenergic neurons; AmbC, nucleus ambiguus, compact part; Itr, intertrigeminal nucleus; KF, Kölliker-Fuse nucleus; LPBr, lateral parabrachial region; LRt, lateral reticular nucleus; Mo5, motor nucleus of the trigeminal nerve; Pn, basilar pontine nuclei; scp, superior cerebellar peduncle; SO, superior olive; VL pons, ventrolateral pons. Panels **b** and **d** modified, with permission, from REF. 108 © (2004) Springer. Images courtesy of G. F. Alheid and D. R. Mc Crimmon.

preBötC neurons during the intervals between inspiratory motor outputs show phasic synaptic potentials at the control frequency that presumably reflect inputs from the RTN/pFRG (FIG. 2b, top and centre)¹⁹.

This type of quantal slowing of inspiratory rhythm also occurs *in vivo*. Quantal slowing of inspiratory activity is seen in vagotomized, anaesthetized juvenile rats given mild doses (0.02 mg kg⁻¹) of the μ -opioid agonist fentanyl⁵³ (FIG. 2c). Interestingly, when expiratory motor nerve activity is also recorded under these conditions *in vivo*, its frequency is unaffected but its burst pattern is markedly affected¹⁹. Expiratory efforts and airflow occur at the same pace both before and after fentanyl administration inspiratory muscle activity no longer occurs during every cycle (FIG. 2c). This is unlikely to be due to a simple block of inspiratory motor output, that is, of (pre)motor neurons, as the pattern of expiratory motor activity is quite different in cycles with and without inspiration (FIG. 2c, inset traces). During normal cycles, expiratory effort occurs just before, and again just after, inspiration. In cycles without inspiration, expiratory activity is a single burst that lacks the inspiratory-related pause, as if the mechanism for inspiration is inactive and expiratory activity evolves without interruption.

Lesions or transections can be used to separate the regions that generate inspiratory and expiratory activity. In *en bloc* preparations, bilateral lesion of the RTN/pFRG causes a marked reduction in respiratory frequency²¹, which suggests that the RTN/pFRG can modulate respiratory rhythm. *In vivo*, in vagotomized and anaesthetized juvenile rats, complete brainstem transections rostral to the VII nucleus (BOX 2b, line X) that leave the RTN/pFRG and preBötC intact do not markedly affect inspiratory or expiratory motor bursting activity, whereas transections at the caudal end of the VII nucleus (BOX 2b, line Y) that disconnect the rostral portion of the RTN/pFRG from the medulla abolish expiratory motor activity without affecting inspiratory rhythm. As mentioned above, these new data have resulted in the need for a re-evaluation of the dogma that such transections cause obligatory gasping (but see REF. 55 for an alternative view), and the idea that the pons is essential for normal rhythmogenesis⁵². These new observations, combined with the fact that transverse slices generate a respiratory-related rhythm, clearly establish a central role for the preBötC in rhythm generation, and show that in some conditions²² but not others^{48,56} in the absence of

how do opiates slow breathing? Differences in the effects of opiates on respiratory motor output in slices versus *en bloc* preparations reveal a surprising explanation¹⁹.

Both slice and *en bloc* preparations preserve the preBötC, but only the *en bloc* preparation retains the RTN/pFRG (BOX 2d). In slices, low (200 nM) concentrations of DAMGO result in a continuous increase in inspiratory periods (FIG. 2a, top). In *en bloc* preparations, the same low concentrations

of DAMGO also cause inspiratory periods to increase on average, but this slowing in breathing results from one or more skipped inspiratory bursts (FIG. 2a, bottom). In other words, in the *en bloc* preparation, DAMGO decreases the mean frequency of inspiratory motor nerve output, but the synchronized bursts in pre-I neurons continue at the control frequency and remain phase-locked to motor nerve output when it occurs (FIG. 2b, bottom)¹⁹. In addition, recordings from

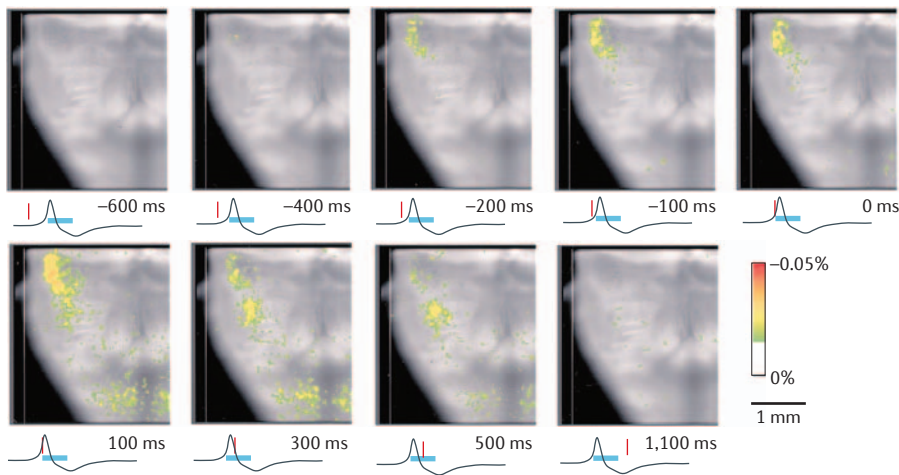


Figure 1 | Ventral view of *en bloc* brainstem showing voltage-dependent respiratory neuronal activity. Frames of averaged (~100 respiratory cycles) optical signals from bath-applied voltage-dependent dye (Di-2-ANEPEQ) reveal two discrete regions of respiratory-modulated neurons in the ventrolateral medulla. Averaging was synchronized to the onset of rhythmic inspiratory burst activity in the C4 ventral nerve root (black trace below each image; burst duration marked by blue bar). The red marker below each frame shows the time of each frame relative to C4 output. One cluster of activity appears at the top (rostral) of each frame ~400 ms before inspiratory onset, whereas a second more caudal cluster appears ~100 ms before. The rostral cluster corresponds to the retrotrapezoid nucleus/parafacial respiratory group and the caudal cluster corresponds to the preBötzing Complex (BOX 2). Reproduced, with permission, from REF. 21 © (2003) Society for Neuroscience.

preBötC activity, the RTN/pFRG can also generate ventilation by active expiration and passive inspiration.

We propose that the preBötC generates inspiratory rhythm and the RTN/pFRG generates expiratory activity, and that these two oscillators are coupled²² (FIG. 3). This idea is further supported by the observation that partial ablation of the preBötC in awake adult goats⁵⁷ or sudden noxious stimuli⁵⁸ in young humans can result in quantal slowing of inspiration, that is, skipped inspiratory cycles, while rhythmic expiratory activity of the abdominal muscles persists. In addition, continuous lung inflation suppresses inspiratory activity and enhances expiratory drive, whereas lung deflations increase the rate of inspiration, while minimizing rhythmic expiratory efforts²².

If there are two distinct oscillators, three questions arise. First, how did a system with distinct oscillators evolve? Two key events characterize the evolution of breathing from fish to mammals (BOX 1). The first includes transformations that support the transition from aquatic to terrestrial breathing in vertebrates. Breathing in fish is driven by cranial nerve innervation of the gills. As primitive fish (such as the ancestors of the lungfish) ventured onto land, rhythmic activity of muscles used for other purposes evolved to drive the emerging lung, and this activity might have had a neural origin that

was independent of the rhythm driving the gill muscles. This speculative hypothesis is supported by observations in amphibians. Developing frogs have two distinct breathing patterns driven by different muscles and nerves: a buccal pattern that uses cranial nerve-innervated muscles to essentially swallow air, and a lung pattern that uses respiratory muscles to pump the lung. Either the buccal or the lung pattern can be suppressed without abolishing its counterpart, but when both are active they appear to be phase-locked⁵⁹. Notably, the lung rhythm is opiate-sensitive (like the mammalian preBötC neurons and inspiration), whereas the buccal rhythm is not⁶⁰ (like pre-I neurons and expiration). A prediction from this hypothesis is that the preBötC is absent in fish.

The second key event was the emergence of the diaphragm in mammals. Respiratory physiology in vertebrates has evolved to support higher resting and peak ventilation. For example, lizards have gular pumps that uncouple respiration from locomotor musculature, which enhances O₂ consumption to support high-speed locomotion⁶¹. Birds use sacs to pump O₂-rich air through non-compliant lungs⁶² to support flight. Uniquely, mammals have muscular diaphragms (BOX 1), a profoundly important ventilatory advance as it allows for continuous high basal rates of ventilation and for the high

levels of ventilation necessary to support substantial increases in metabolism. The improvements in gas exchange associated with the development of the diaphragm were probably crucial for brain evolution, as it provided a platform for evolution of a brain that consumes extraordinary amounts of O₂ and is generally intolerant of even transient anoxia. The neural circuits driving the primitive diaphragm could have evolved independently of pre-existing circuitry driving the rhythmic pumping machinery of the rib cage, abdominal or upper airway muscles; or it could have been based on the opiate-sensitive oscillator driving lung breathing in amphibians⁶⁰. Nonetheless, a respiratory movement pattern consisting of alternating inspiratory activity to lower the diaphragm with expiratory motor activity has considerable mechanical advantages for efficient ventilation over a broad range of metabolic demand. Therefore, the neural oscillators for breathing, which may have arisen independently, might be expected to have evolved to be coupled.

Second, are these oscillators equal partners or does one or the other dominate rhythm and, if so, under what conditions? *In vitro*, RTN/pFRG neurons activate several hundred milliseconds before preBötC neurons (FIG. 1), which Onimaru and Homma interpret as evidence that the rostral RTN/pFRG is the trigger site for inspiratory rhythm²¹. However, *in vivo*, the functional role of RTN/pFRG seems to be more closely tied to expiration than inspiration²². Reptiles and amphibians with lower body temperatures, lower metabolic rates and no diaphragm have a breathing pattern of active expiration and passive inspiration. On the other hand, at rest, mammals, which have a diaphragm as well as higher body temperatures and metabolic rates, breathe with a pattern of active inspiration and passive expiration; the RTN/pFRG might not even be rhythmic until there is active expiration²², although its tonic activity would affect the excitability of the preBötC²⁸. Breathing in behaving adult rats is pathologically disrupted by destruction of the preBötC^{19,48} (see below). Collectively, these results suggest that the balance in the dominance of these two oscillators shifts towards the preBötC in mammals under normal conditions. Under resting conditions, when there is typically no active expiration, it may only be the preBötC that is rhythmic.

There might be a special role for two oscillators at birth. In mammals there is a surge of endogenous opiates at birth⁶³ (see discussion in REF. 22). This postnatal

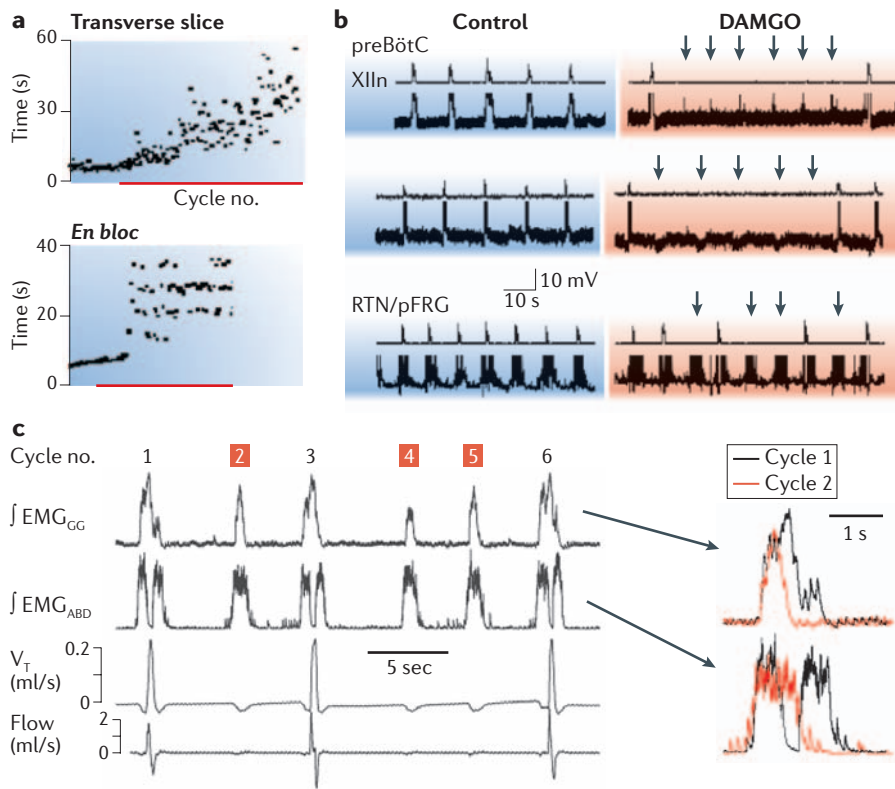


Figure 2 | Opiate agonists induce quantal slowing of inspirations without affecting frequency of active expirations. **a** | Sequential plots of inspiratory period *in vitro* before and after treatment with the μ -opiate agonist DAMGO (d-Ala(2),NMePhe(4),Gly-ol(5)enkephalin, red bar). The top trace shows continuous slowing of rhythm in the slice; the bottom trace shows quantal slowing of rhythm *en bloc*. **b** | Simultaneous recordings of inspiratory burst activity in control and DAMGO-treated XII nerve and preBötzing Complex (preBötC) inspiratory neurons (top two pairs of traces) and pre-inspiratory (pre-I) neurons in the retrotrapezoid nucleus/parafacial respiratory group (bottom pair). Arrows in DAMGO traces indicate subthreshold events in preBötC neurons during skipped bursts, which occur at the approximate time expected for inspiratory bursts at control frequency, or unperturbed bursting in pre-I neurons. **c** | *In vivo* recordings in juvenile rats following fentanyl injection. Traces on the left show typical recording with normal cycles (1, 3, 6) interspersed with cycles without inspiratory activity (2,4,5). $\int EMG_{ABD}$, integrated abdominal muscle electromyogram (EMG); $\int EMG_{GG}$, integrated genioglossus muscle EMG; flow, air flow (up or down for inspiratory or expiratory air flow, respectively); V_T , tidal volume. Traces on the right show superimposition of $\int EMG_{GG}$ and $\int EMG_{ABD}$ in a normal cycle (black) compared with an inspiratory skipped cycle (red). Note the marked differences, especially in the $\int EMG_{ABD}$ burst. Panels **a** and **b** reproduced, with permission, from REF. 19 © (2003) Cell Press. Panel **c** reproduced, with permission, from REF. 22 © (2006) The Physiological Society.

increase in opiate release would depress the excitability of the preBötC but not that of the RTN/pFRG, allowing the latter to act as an ‘anti-apnoea’ centre that would promote breathing immediately after birth⁶⁴, either by rhythmically driving breathing or by providing the drive necessary to keep the preBötC rhythmic²². This view is supported by experiments in *Krox20*^{-/-} (early growth response 2) mice, which have neuroanatomical defects that appear to result in deletion of the brainstem region containing the RTN/pFRG but do not seem to affect the preBötC^{32,64}. These mutant mice die of fatal apnoeas within 18 h of birth, but brief postnatal administration

of naloxone (which has no effect in control mice) rescues these pups by eliminating apnoea. So, without the RTN/pFRG to provide respiratory drive, the opiate surge at birth could fatally depress preBötC function. We suggest that in *Krox20*^{-/-} mice, in the absence of the RTN/pFRG, the opiate-induced depression of the preBötC causes prolonged and ultimately fatal apnoeas; naloxone would reverse this depression, which is developmentally relieved within 2 days⁶⁴, allowing the preBötC to function adequately for survival. This special role for the RTN/pFRG at birth is consistent with the two-oscillator model.

Third, are there possible benefits of two (or more) distinct rhythmogenic networks? The respiratory rhythm must be robust over about an order of magnitude in O₂ consumption, persisting without substantive interruption from birth until death. At the same time, it must adjust rapidly to changes in metabolic demand, such as during exercise. In humans at rest, a 2% increase in arterial CO₂ can produce a >30% increase in ventilation. However, high-gain systems are prone to instability, so there must be neural mechanisms to ensure stability while remaining labile to feedback⁶⁵. Therefore, the RRG is embedded in a dense plexus of feedback sources, which includes lung, muscle and joint mechanoreceptors, lung and airway nociceptors, and chemoreceptors. A system of two RRGs that responds differently to various sensory or modulatory inputs might be helpful in this regard. If one RRG responds rapidly while the other is insensitive (FIG. 3), breathing could respond rapidly to various stimuli, yet remain stable. Excitatory and inhibitory coupling between inspiratory activity and RTN/pFRG neurons¹⁹, and different responses to opiates and to pulmonary afferents²² are consistent with this idea.

Effects of preBötC lesions. Breathing does not stop during wakefulness, except during transient behaviours such as speech, emesis or defecation. However, during sleep or unconsciousness breathing is less reliable, and sleep-disordered breathing, such as sleep apnoea, is quite common, even in otherwise healthy humans. Lesions of the preBötC can lead to significant disruption of, or even pathological, breathing⁵⁶.

After local administration by micropipette of a potent and specific neurotoxin (substance P conjugated to saporin: SP-SAP) that slowly kills neurons that express neurokinin 1 receptors (NK1Rs) to the preBötC in adult rats, breathing deteriorates in a fixed sequence over a period of days^{48,56}. Sustained and repeated apnoeas first appear during REM sleep, while breathing remains normal during wakefulness and non-REM sleep. These disturbances then spill over into non-REM sleep without any marked changes in breathing during wakefulness (FIG. 4). Finally, ataxic breathing develops that extends into wakefulness⁴⁸. Humans rarely exhibit ataxic breathing during wakefulness, which suggests that such extensive loss of preBötC neurons is unlikely, perhaps because humans die long before they reach this stage. These data emphasize the essential importance of the preBötC for the maintenance of normal

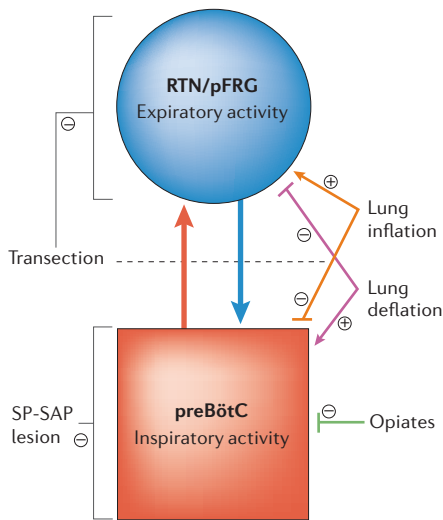


Figure 3 | Summary of our view of the gross organization of respiratory rhythmogenesis in the brainstem of mammals. We propose that there are two oscillators that are differentially affected by various inputs, such as opiates and lung inflation and deflation. The more rostral oscillator is located in the region of the retrotrapezoid nucleus/parafacial respiratory group (RTN/pFRG) and appears to drive active expiratory activity. It might not be rhythmic in mammals at rest, when there is little or no active expiration. The more caudal oscillator is located in the preBöttinger Complex (preBötC) and appears to drive inspiratory activity. Substance P-saporin (SP-SAP) lesion of preBötC neurokinin 1 receptor (NK1R) neurons disrupts breathing. Transections between the two oscillators disrupt expiratory motor outflow, while inspiratory activity continues unabated. Lung inflation enhances the activity of the expiratory oscillator and depresses the inspiratory oscillator, which serves, ultimately, to reduce lung volume, whereas lung deflation has the opposite effect on the inspiratory and expiratory oscillators. We further speculate that the mechanism of rhythmogenesis in the preBötC involves a group pacemaker. However, this model does not resolve the question of why lesions of the preBötC NK1R neurons in adult rats should disrupt rhythm and render breathing ineffective.

breathing, and suggest that deterioration of preBötC function probably requires significant neuronal loss⁴⁸, which produces pathological breathing patterns that first manifest during sleep. These results are consistent with the two-oscillator model, yet clearly show that the RTN/pFRG is insufficient, on its own, to drive breathing after some types of lesion to the preBötC, at least in adult rats. The mechanisms that preclude independent oscillations in the RTN/pFRG of adults are unknown, but RTN/pFRG function might

depend on some level of tonic preBötC activity that is lost after extensive lesions of the latter.

Serious disruption of breathing during sleep is seen in at least three human neurodegenerative diseases: Parkinson's disease^{66,67}, MSA^{68,69} and ALS^{70,71}. During the late stages of Parkinson's disease and MSA there is substantial loss of NK1R neurons in a region of the human ventrolateral brainstem that includes the preBötC⁷². If this reflects loss of preBötC neurons, then significant disturbances of breathing during sleep, but not wakefulness, could result. In ALS, the neurodegenerative process might target neurons that lack Ca^{2+} buffers⁷³. Many motor neuron pools, the degeneration of which underlies muscle atrophy in ALS, lack such buffers. However, other neurons also die. The Ca^{2+} buffer parvalbumin is widely distributed in neurons in the ventral respiratory column (BOX 2), with the notable exception of the preBötC⁷⁴. Two other Ca^{2+} buffers, calretinin and calbindin, might also be lacking in preBötC neurons. Therefore, preBötC neurons might be vulnerable to neurodegeneration in ALS, and, if so, their loss could contribute to the respiratory failure and death during sleep that often accompanies late stage ALS.

Our data from rats indicate that although disrupted breathing during wakefulness is only apparent after substantial preBötC neuronal loss, disruptions in breathing during sleep are apparent earlier. In otherwise healthy humans, the incidence of central sleep apnoeas, as distinguished from obstructive sleep apnoeas, is relatively low until ~65 years of age, and increases rapidly thereafter⁷⁵. The likelihood of central sleep apnoeas increases with age in the elderly and may be part of the natural aging process⁷⁵; we suggest that a cumulative lifetime loss of preBötC neurons contributes to this increase⁵⁶. As mentioned above, preBötC neurons might be vulnerable to neurodegeneration. Recurring apnoeas (whether central or obstructive) could initiate a vicious cycle in which repeated episodes accelerate the loss of preBötC neurons, exacerbating apnoeas and ultimately increasing the threshold for arousal to wakefulness that is essential to restart breathing. As preBötC degeneration progresses, death by asphyxia resulting from a failure to arouse from apnoea or by an induced cerebro- or cardiovascular incident during sleep would become more likely⁵⁶. These conditions that increase the susceptibility to death have been associated with sleep-disordered breathing, central apnoeas in particular, in elderly populations⁷⁶.

Mechanisms of rhythm generation

The slice preparation isolates the preBötC and maintains inspiratory motor nerve activity. As an *in vitro* system, the slice lacks afferent inputs, and is studied below normal body temperature. Robust and long-lasting (hours) rhythm generation in slices requires an ionic or pharmacological boost, typically elevated extracellular K^+ , whereas *en bloc* preparations do not require such a boost. Rostral respiratory networks, including the RTN/pFRG, are not contained in slices (BOX 2c, FIG. 2). Therefore, the slice represents the minimal experimental model of inspiratory activity. Understanding the mechanisms that underlie inspiratory rhythm generation in the slice will serve as a foundation for unravelling the mechanisms in more intact preparations, including *en bloc* and *in vivo*.

The pacemaker hypothesis. The demonstration that *in vitro* rhythms continue unabated after postsynaptic inhibition is blocked¹⁴ led directly to the hypothesis that pacemaker neurons generate the respiratory rhythm¹⁰. Subsequently, preBötC neurons with bursting-pacemaker properties that depend on a persistent Na^+ current (I_{NaP}) were identified^{10,77}. Their voltage-dependent bursting mechanism is now well understood (BOX 3); it is unaffected by Cd^{2+} but is antagonized by riluzole, which blocks I_{NaP} ^{78,79}. The proportion of preBötC inspiratory neurons with voltage-dependent pacemaker properties is between 5 and 25%^{78,80–82}. Another phenotype of pacemaker emerges developmentally, being <1% of the preBötC population before postnatal day (P)4, and becoming ~8% of the preBötC population between P8 and P15 (there are no published data for >P15)^{82,83}. In contrast to I_{NaP} pacemakers, these neurons are voltage-independent and their activity is reduced by Cd^{2+} or flufenamic acid (FFA), which suggests that bursting depends on Ca^{2+} and/or Ca^{2+} -activated nonspecific and voltage-insensitive cation current (I_{CAN})^{81,82}.

The pacemaker hypothesis, which in its strongest form posits that pacemaker neurons are obligatory for rhythm generation, predicts that abolishing endogenous bursting activity should severely disrupt or abolish respiratory rhythm. Surprisingly, if bath application of riluzole is used to silence synaptically isolated I_{NaP} pacemaker neurons, the frequency of rhythmic motor output in slices is unaffected⁸¹. Is it possible that I_{CAN} -mediated bursting neurons, which are riluzole-insensitive and sparse (constituting <1% of neurons during P0–P5), drive the

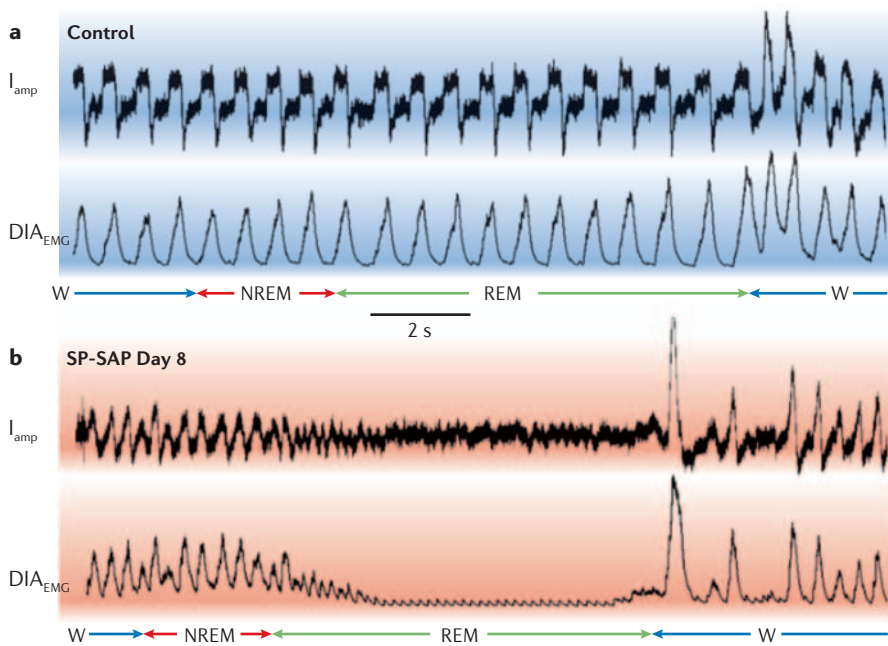


Figure 4 | Lesions of the preBötzinger Complex significantly disturb breathing pattern in an unrestrained, unanaesthetized adult rat. SP-SAP was injected bilaterally into the preBötzinger Complex (preBötC) and by (or shortly after) day 10 post-injection had killed >80% of preBötC neurokinin 1 receptor (NK1R) neurons. Under control conditions, breathing is continuous throughout the sleep-wake cycle, as determined from electroencephalogram (EEG) and neck electromyogram (EMG) signals (not shown). However, on day 8 after SP-SAP administration breathing pattern ceases to be normal during REM (rapid eye movement) sleep, when apnoea develops and ventilation is restored only on waking, a cycle that then repeats. DIA_{EMG} , integrated diaphragmatic EMG; I_{amp} , inspiratory amplitude; NREM, non-REM sleep; W, wakefulness. Reproduced, with permission, from REF. 56 © (2005) Macmillan Publishers Ltd.

rhythm in the absence of I_{NaP} ? A means of testing this experimentally would be to abolish bursting behaviour in both populations of pacemaker neurons simultaneously by pharmacologically blocking I_{NaP} and I_{CAN} . If rhythm generation depends on either or both types of pacemaker neuron, then this manipulation should abolish respiratory rhythm. Co-application of riluzole and FFA does silence the respiratory rhythm in mouse slices *in vitro*^{81,82}. However, as almost all preBötC neurons express I_{NaP} ^{78,84} and I_{CAN} ⁸¹, these drugs also lower overall neuronal excitability throughout the network: blocking I_{NaP} hyperpolarizes baseline membrane potentials and blocking both currents removes inward currents that ordinarily enhance inspiratory synaptic drive. Therefore, the loss of rhythm could simply be due to riluzole and FFA lowering the excitability of many, or even all, neurons, regardless of their effects on pacemaker properties. Consistent with this idea, AMPA (α -amino-3-hydroxy-5-methyl-4-isoxazole propionic acid) and substance P excite preBötC neurons without creating the requisite region of negative slope in the current-voltage

relationship^{16,85} that is necessary for endogenous rhythmic bursting in a synaptically isolated neuron. Yet bath-applied substance P (0.5–2 μ M) or AMPA (0.5 μ M) can restart the respiratory rhythm in the presence of riluzole and FFA⁸¹. These results challenge the obligatory rhythmogenic role of pacemaker neurons. Moreover, we suggest that in the absence of substantial corroborating evidence, one cannot interpret any effect on respiratory rhythm of riluzole, FFA or tetrodotoxin, *in vitro*, *in situ* or *in vivo*, as evidence that pacemaker neurons have any, much less an obligatory, role in respiratory rhythm generation.

Aspects of our view of the role of pacemaker neurons are disputed⁸⁶. What is not disputed is that intrinsic I_{NaP} and I_{CAN} are ubiquitous in preBötC neurons and contribute to burst generation in the context of inspiratory-related synaptic input. These currents are a crucial part of the group-pacemaker hypothesis^{11,81,87}, which we discuss below, in that excitatory synapses trigger the activation of intrinsic conductances that ultimately augment synaptic excitation to generate robust inspiratory bursts.

The group-pacemaker hypothesis. Emergent systems are widespread in biology⁸⁸. Without exception, such systems comprise autonomous agents that interact according to simple rules and produce meaningful population-level behaviours. When these behaviours are rhythmic, the underlying network always incorporates two essential features: positive feedback, which serves to coordinate individual elements and promote the formation of a collective temporal pattern, and negative feedback, which can temporarily halt or reverse the assembly process fuelled by positive feedback. These processes, by their nature, alternate. The rhythms are called emergent because individual agents interact following simple rules but none possesses a blueprint for the collective behaviour that results.

Our favoured model for rhythmogenesis is the group-pacemaker hypothesis, in which the behaviour is emergent. We posit that periodic inspiratory bursts result from recurrent synaptic connections that combine with the intrinsic membrane properties of individual neurons^{11,81,87} (FIG. 5). In this framework, excitatory interconnections between preBötC neurons initiate positive feedback through recurrent excitation. I_{NaP} and I_{CAN} serve to amplify the synaptic depolarization and then generate high-frequency spiking to form the full inspiratory drive potential characteristic of all preBötC neurons. The small subset of bursting-pacemaker neurons, which can be rhythmically active even when synaptically isolated, participates in network activity but is not essential because most preBötC neurons discharge inspiratory

Glossary

Rett syndrome

Mutation of the *MeCP2* gene on the X-chromosome causes irregular breathing patterns during wakefulness and motor control deficits.

Ondine's curse

(Also known as congenital central hypoventilation syndrome). Characterized by episodes of sleep apnoea starting at birth that lead to pathophysiological respiration.

Amyotrophic lateral sclerosis

(ALS; also known as Lou Gehrig's disease). A neurodegenerative disorder characterized by progressive motor neuronal cell death and severe muscular atrophy.

Multiple systems atrophy

(MSA). A neurodegenerative disease of undetermined aetiology encompassing several clinical syndromes including (but not limited to) parkinsonism and autonomic dysfunction.

Ataxia

Uncoordinated muscular movements symptomatic of some nervous disorders or pathological conditions.

bursts with the aid of I_{NaP} and I_{CAN} induced by excitatory synaptic input. The idea of a group pacemaker is consistent with the observation that in the presence of riluzole and FFA, when pacemaker properties are abolished, respiratory rhythm can continue as long as pharmacological excitation is provided to compensate for the significant reduction of I_{NaP} and I_{CAN} , and the attendant lowering of excitability⁸¹. Substance P or AMPA accentuate excitability by depolarizing preBötC neurons and revive network rhythmicity as predicted^{82,89}.

Recurrent glutamatergic excitation induces I_{NaP} and I_{CAN} . Depolarization directly evokes I_{NaP} ^{78,84,90} and voltage-gated Ca^{2+} channels^{91–95}. Metabotropic glutamate receptors also activate periodically during inspiration⁹⁶, which boosts I_{CAN} through intracellular Ca^{2+} release and might also modulate channels.

Early models of rhythm generation proposed that high-threshold inhibitory neurons had an essential role⁷ in inspiratory phase termination and such neurons might be involved in adult inspiration *in vivo*⁹⁷. Although glycinergic neurons are not essential for respiratory rhythms in neonates *in vivo*, both GABA-containing and glycinergic neurons contribute to controlling the membrane potential trajectory of preBötC neurons and participate in the formation of the normal respiratory pattern^{13,17,45,97,98}. However, focusing on necessary mechanisms, GABA-containing and glycinergic neurons are not essential *in vitro* as the rhythm persists after the removal of postsynaptic inhibition^{13,14,16,17}. Activity-dependent outward currents such as Ca^{2+} -dependent K^+ currents and electrogenic pumps seem to underlie the negative feedback process that causes burst termination *in vitro*^{45,99,100} (FIG. 5, part 1).

PreBötC neurons slowly recover from post-inspiratory hyperpolarization in a process that is dominated by subthreshold K^+ channels and tonic inputs. The most excitable neurons in the system recover midway through expiration and begin spiking before the next inspiratory cycle (FIG. 5, part 2). In simulations we find that early-onset spiking in a small fraction of neurons recruits other less excitable neurons to also start firing, and that this initiates the positive feedback that spreads rapidly in an aggregation process and ultimately consumes the whole network during inspiration¹⁰¹ (FIG. 5, parts 3 and 4).

The following observations suggest that I_{CAN} is dendritically located^{11,87}. Somatic depolarization fails to evoke inspiratory-like potentials with high-frequency spiking,

Box 3 | Persistent Na^+ current and the pacemaker hypothesis

Bursting-pacemaker neurons are capable of oscillating between spiking and quiescent phases, when synaptically isolated. The duty cycle of bursting mimics respiratory rhythms *in vitro*.

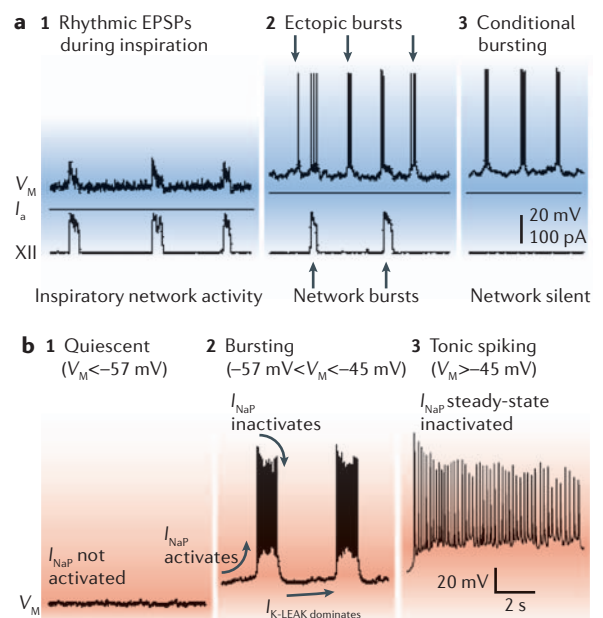
A phenotype of voltage-dependent bursting neurons is found in the preBötzinger Complex (preBötC) of neonatal rodents (postnatal day (P)0–15). These neurons exhibit excitatory postsynaptic potentials (EPSPs) in phase with XII nerve motor output at baseline membrane potentials of -60 mV (or lower) but are otherwise silent (panels **a1** and **b1**). Tonic depolarization above -57 mV causes ectopic bursting during their normally silent period, that is, bursts similar to those occurring during inspiration, which reflect an

intrinsic burst-generating mechanism (panel **a2**). Pacemaker neurons maintain voltage-dependent bursting in the range of -57 to -45 mV after synaptic isolation (panels **a3** and **b2**). When depolarization exceeds -45 mV, bursting gives way to tonic spiking (panel **b3**).

Voltage-dependent bursting depends on persistent Na^+ current (I_{NaP}) and leakage K^+ current (I_{K-LEAK}). I_{NaP} causes burst depolarization and I_{K-LEAK} regulates excitability and sets the baseline membrane potential. Bursts self-terminate owing to I_{NaP} inactivation.

Bursting is conditional because it depends on baseline membrane potential. Depolarizing the baseline membrane potential imposes steady-state inactivation that limits the amount of I_{NaP} available for subsequent bursts. By limiting I_{NaP} baseline depolarization decreases burst duration and reduces the time needed for de-inactivation of I_{NaP} after a burst. Therefore, depolarization shortens the burst cycle and increases burst frequency. Tonic inputs can also hyperpolarize the baseline to -57 mV (or lower), which fails to activate I_{NaP} and the neuron remains quiescent (panel **b1**). Depolarization to -45 mV (or higher) steady state inactivates I_{NaP} to such an extent that burst cycles are no longer possible and the neuron spikes tonically (panel **b3**).

I_{NaP} is ubiquitous in preBötC neurons and pacemaker properties occur in a subset with appropriate I_{NaP}/I_{K-LEAK} ratios. Whether these neurons contribute to or are essential to rhythm generation is discussed in the text. V_M , membrane potential of a rhythm-generating neuron. I_a , applied current.



seemingly because it is unable to evoke the intrinsic burst-generating conductances. In addition, the hyperpolarizing currents that activate at inspiratory burst termination cannot be reversed when the soma is held at membrane potentials of less than the reversal potential for K^+ , which suggests that the burst-generating conductances are electrotonically distant. At -70 mV, somatic Ca^{2+} fluxes (which readily occur at more depolarized membrane potentials) cease, yet inspiratory currents remain robust⁹¹, suggesting that burst generation relies on conductances and Ca^{2+} fluxes at dendritic locations.

Many details remain to be established with regard to the group-pacemaker hypothesis. Probably the most pressing

issue about which we know least pertains to the connectivity among respiratory neurons and the role these connections have in governing network rhythms. Various connection schemes dramatically influence the temporal dynamics in a wide array of network systems in the physical and biological worlds, and influence the robustness of network function in the event of attack or insult, as well as the ability to respond to external inputs^{102–104}.

Conclusions and future directions

Recent experiments *in vivo* and *in vitro* have provided crucial insights into the sites and mechanisms that underlie the rhythm of breathing in mammals⁷. With respect to site, we propose that there are two distinct, but

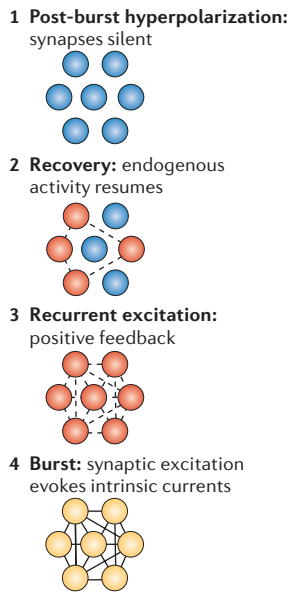
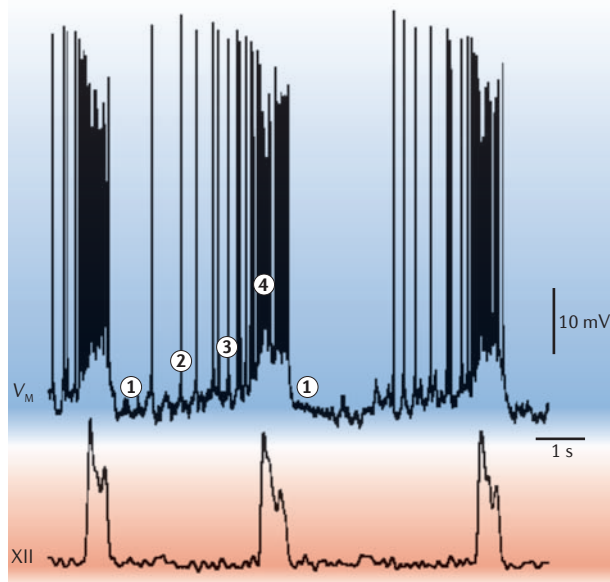


Figure 5 | Group-pacemaker hypothesis of respiratory rhythm generation. The membrane potential of a rhythm-generating neuron is shown (V_M , top trace) with network activity, represented by XII motor output (XII, bottom). Images to the right of the traces depict neuronal activity at different stages of the cycle. **1** is the refractory state that follows inspiration, in which activity-dependent outward currents depress membrane potential, and excitatory synapses in the network are inactive. During epoch **2**, the most excitable neurons recover from post-burst hyperpolarization and begin to spike at a low rate. By **3** these highly excitable cells begin to synaptically activate other neurons, leading to aggregation of network activity itself due to recurrent synaptic excitation — a positive-feedback process. The inspiratory burst (**4**) ensues once a critical number of cells in the network are activated by recurrent excitation. In this final step, synaptic inputs recruit burst-generating intrinsic currents such as Ca^{2+} -activated nonspecific cationic current (I_{CAN}) and persistent Na^+ current (I_{Nap}), which give rise to large inspiratory burst potentials with high-frequency spike activity. Inspiratory bursts terminate owing to intrinsic properties of cells that can reverse the positive feedback process, including Ca^{2+} -dependent K^+ currents and electrogenic pumps, which are recruited by cationic influx during inspiration.

normally coupled, respiratory oscillators in the brainstem, and that the rhythm in adult mammals is dominated by the preBötC²². We propose that the preBötC network functions as a self-organized group-pacemaker in slices, wherein individual pacemaker neurons can be embedded but are not essential for emergent network rhythms that depend on connectivity and synaptically activated burst-generating currents.

To make significant progress in terms of our current understanding of the neural mechanisms that underlie respiratory rhythm, we emphasize the need for development of more specific genetic manipulations that will allow selective modulation of intrinsic properties; an example would be the insertion of non-endogenous ion channels that could be used to reversibly silence^{105–107} putative rhythm-generating neurons. As we continue to gain information about the cellular and network mechanisms, we will need to develop realistic mathematical models that address

the question of how interacting coupled respiratory oscillators stabilize breathing or enhance the ability to respond to physiological challenges. Models will also allow us to investigate emergent mechanisms of rhythmogenesis in networks. This multilevel approach should lead to an understanding of the central control of breathing under normal conditions and of the dysfunctions that underlie the morbidity and mortality of breathing disorders in human infants, the elderly and patients with neurodegenerative disorders.

Jack Feldman is at the Department of Neurobiology, David Geffen School of Medicine at the University of California, Los Angeles, BOX 951763, Los Angeles, California 90095-1763, USA.

Christopher Del Negro is at the Department of Applied Science, McGlothlin-Street Hall, The College of William and Mary, Williamsburg, Virginia 23187-8795, USA.

Correspondence to J.L.F. e-mail: feldman@ucla.edu
doi:10.38/nrn1871

- Weese-Mayer, D. E. *et al.* Association of the serotonin transporter gene with sudden infant death syndrome: a haplotype analysis. *Am. J. Med. Genet. A* **122**, 238–245 (2003).
- Amir, R. E. *et al.* Rett syndrome is caused by mutations in X-linked *MECP2*, encoding methyl-CpG-binding protein 2. *Nature Genet.* **23**, 185–188 (1999).
- Chen, M. L. & Keens, T. G. Congenital central hypoventilation syndrome: not just another rare disorder. *Paediatr. Respir. Rev.* **5**, 182–189 (2004).
- Gozal, D. New concepts in abnormalities of respiratory control in children. *Curr. Opin. Pediatr.* **16**, 305–308 (2004).
- Blanchi, B. & Sieweke, M. H. Mutations of brainstem transcription factors and central respiratory disorders. *Trends Mol. Med.* **11**, 23–30 (2005).
- McKay, L. C., Evans, K. C., Frackowiak, R. S. & Corfield, D. R. Neural correlates of voluntary breathing in humans. *J. Appl. Physiol.* **95**, 1170–1178 (2003).
- Feldman, J. L. in *Handbook of Physiology* Vol. IV (ed. Bloom, F. E.) 463–524 (American Physiological Society, Bethesda, Maryland, USA, 1986).
- Suzue, T. Respiratory rhythm generation in the *in vitro* brain stem–spinal cord preparation of the neonatal rat. *J. Physiol. (Lond.)* **354**, 173–183 (1984).
- Feldman, J. L., Connelly, C. A., Ellenberger, H. H. & Smith, J. C. The cardiorespiratory system within the brainstem. *Eur. J. Neurosci.* **3** (Suppl.), 171 (1990).
- Smith, J. C., Ellenberger, H. H., Ballanyi, K., Richter, D. W. & Feldman, J. L. Pre-Bötzinger complex: a brainstem region that may generate respiratory rhythm in mammals. *Science* **254**, 726–729 (1991).
- Rekling, J. C. & Feldman, J. L. Pre-Bötzinger complex and pacemaker neurons: hypothesized site and kernel for respiratory rhythm generation. *Annu. Rev. Physiol.* **60**, 385–405 (1998).
- Smith, J. C. *et al.* Respiratory rhythm generation in neonatal and adult mammals: the hybrid pacemaker-network model. *Respir. Physiol.* **122**, 131–147 (2000).
- Brockhaus, J. & Ballanyi, K. Synaptic inhibition in the isolated respiratory network of neonatal rats. *Eur. J. Neurosci.* **10**, 3823–3839 (1998).
- Feldman, J. L. & Smith, J. C. Cellular mechanisms underlying modulation of breathing pattern in mammals. *Ann. NY Acad. Sci.* **563**, 114–130 (1989).
- Onimaru, H., Arata, A. & Homma, I. Inhibitory synaptic inputs to the respiratory rhythm generator in the medulla isolated from newborn rats. *Pflügers Arch.* **417**, 425–432 (1990).
- Gray, P. A., Rekling, J. C., Bocchiaro, C. M. & Feldman, J. L. Modulation of respiratory frequency by peptidergic input to rhythmogenic neurons in the pre-Bötzinger complex. *Science* **286**, 1566–1568 (1999).
- Shao, X. M. & Feldman, J. L. Respiratory rhythm generation and synaptic inhibition of expiratory neurons in pre-Bötzinger complex: differential roles of glycinergic and GABAergic neural transmission. *J. Neurophysiol.* **77**, 1853–1860 (1997).
- Onimaru, H., Arata, A. & Homma, I. Firing properties of respiratory rhythm generating neurons in the absence of synaptic transmission in rat medulla *in vitro*. *Exp. Brain Res.* **76**, 530–536 (1989).
- Mellen, N. M., Janczewski, W. A., Bocchiaro, C. M. & Feldman, J. L. Opioid-induced quantal slowing reveals dual networks for respiratory rhythm generation. *Neuron* **37**, 821–826 (2003).
- Smith, J. C., Morrison, D. E., Ellenberger, H. H., Otto, M. R. & Feldman, J. L. Brainstem projections to the major respiratory neuron populations in the medulla of the cat. *J. Comp. Neurol.* **281**, 69–96 (1989).
- Onimaru, H. & Homma, I. A novel functional neuron group for respiratory rhythm generation in the ventral medulla. *J. Neurosci.* **23**, 1478–1486 (2003).
- Janczewski, W. A. & Feldman, J. L. Distinct rhythm generators for inspiration and expiration in the juvenile rat. *J. Physiol. (Lond.)* **570**, 407–420 (2006).
- Feldman, J. L., Mitchell, G. S. & Nattie, E. E. Breathing: rhythmicity, plasticity, chemosensitivity. *Annu. Rev. Neurosci.* **26**, 239–266 (2003).
- Gourine, A. V., Llaudet, E., Dale, N. & Spyer, K. M. ATP is a mediator of chemosensory transduction in the central nervous system. *Nature* **436**, 108–111 (2005).
- Williams, S. E. *et al.* Hemoxygenase-2 is an oxygen sensor for a calcium-sensitive potassium channel. *Science* **306**, 2093–2097 (2004).

26. Mulkey, D. K. *et al.* Respiratory control by ventral surface chemoreceptor neurons in rats. *Nature Neurosci.* **7**, 1360–1369 (2004).
27. Richerson, G. B. Serotonergic neurons as carbon dioxide sensors that maintain pH homeostasis. *Nature Rev. Neurosci.* **5**, 449–461 (2004).
28. Guyenet, P. G., Mulkey, D. K., Stornetta, R. L. & Bayliss, D. A. Regulation of ventral surface chemoreceptors by the central respiratory pattern generator. *J. Neurosci.* **25**, 8938–8947 (2005).
29. Alheid, G. F., Milsom, W. K. & McCrimmon, D. R. Pontine influences on breathing: an overview. *Respir. Physiol. Neurobiol.* **143**, 105–114 (2004).
30. Bianchi, A. L., Denavit-Saubie, M. & Champagnat, J. Central control of breathing in mammals: neuronal circuitry, membrane properties, and neurotransmitters. *Physiol. Rev.* **75**, 1–45 (1995).
31. Richter, D. W. & Spyer, K. M. Studying rhythmogenesis of breathing: comparison of *in vivo* and *in vitro* models. *Trends Neurosci.* **24**, 464–472 (2001).
32. Borday, C. *et al.* Developmental gene control of brainstem function: views from the embryo. *Prog. Biophys. Mol. Biol.* **84**, 89–106 (2004).
33. Hilaire, G. & Duron, B. Maturation of the mammalian respiratory system. *Physiol. Rev.* **79**, 325–360 (1999).
34. Pagliardini, S., Ren, J. & Greer, J. J. Ontogeny of the pre-Bötzinger complex in perinatal rats. *J. Neurosci.* **23**, 9575–9584 (2003).
35. Viemari, J. C., Burnet, H., Bevenegut, M. & Hilaire, G. Perinatal maturation of the mouse respiratory rhythm-generator: *in vivo* and *in vitro* studies. *Eur. J. Neurosci.* **17**, 1233–1244 (2005).
36. Coutinho, A. P. *et al.* Induction of a pacemaker rhythm generator by rhombomere 3 in the chick embryo. *J. Neurosci.* **24**, 9383–9390 (2004).
37. Fortin, G., Borday, C., Germon, I. & Champagnat, J. Breathing at birth: influence of early developmental events. *Adv. Exp. Med. Biol.* **551**, 143–148 (2004).
38. Thoby-Brisson, M., Trinh, J. B., Champagnat, J. & Fortin, G. Emergence of the pre-Bötzinger respiratory rhythm generator in the mouse embryo. *J. Neurosci.* **25**, 4307–4318 (2005).
39. Baker-Herman, T. L. *et al.* BDNF is necessary and sufficient for spinal respiratory plasticity following intermittent hypoxia. *Nature Neurosci.* **7**, 48–55 (2004).
40. Viemari, J. C. *et al.* Mecp2 deficiency disrupts norepinephrine and respiratory systems in mice. *J. Neurosci.* **25**, 11521–11530 (2005).
41. Prinz, A. A., Bucher, D. & Marder, E. Similar network activity from disparate circuit parameters. *Nature Neurosci.* **7**, 1345–1352 (2004).
42. Busselberg, D., Bischoff, A. M., Paton, J. F. & Richter, D. W. Reorganisation of respiratory network activity after loss of glycinergic inhibition. *Pflügers Arch.* **441**, 444–449 (2001).
43. Dutschmann, M. & Paton, J. F. Glycinergic inhibition is essential for co-ordinating cranial and spinal respiratory motor outputs in the neonatal rat. *J. Physiol. (Lond.)* **543**, 643–653 (2002).
44. Dutschmann, M. & Paton, J. F. Inhibitory synaptic mechanisms regulating upper airway patency. *Respir. Physiol. Neurobiol.* **131**, 57–63 (2002).
45. Busselberg, D., Bischoff, A. M. & Richter, D. W. A combined blockade of glycine and calcium-dependent potassium channels abolishes the respiratory rhythm. *Neuroscience* **122**, 831–841 (2003).
46. Smith, J. C., Greer, J. J., Liu, G. S. & Feldman, J. L. Neural mechanisms generating respiratory pattern in mammalian brain stem–spinal cord *in vitro*. I. Spatiotemporal patterns of motor and medullary neuron activity. *J. Neurophysiol.* **64**, 1149–1169 (1990).
47. Ramirez, J. M. *et al.* Respiratory rhythm generation: converging concepts from *in vitro* and *in vivo* approaches? *Respir. Physiol. Neurobiol.* **131**, 43–56 (2002).
48. Gray, P. A., Janczewski, W. A., Mellen, N., McCrimmon, D. R. & Feldman, J. L. Normal breathing requires preBötzinger complex neurokinin-1 receptor-expressing neurons. *Nature Neurosci.* **4**, 927–930 (2001).
49. Bianchi, B. *et al.* MafB deficiency causes defective respiratory rhythmogenesis and fatal central apnea at birth. *Nature Neurosci.* **6**, 1091–1100 (2003).
50. Lumsden, T. Effects of bulbar anaemia on respiratory movements. *J. Physiol.* **59**, lvii–lx (1924).
51. St John, W. M. Differential alteration by hypercapnia and hypoxia of the apneustic respiratory pattern in decerebrate cats. *J. Physiol. (Lond.)* **287**, 467–491 (1979).
52. St John, W. M. & Paton, J. F. Role of pontile mechanisms in the neurogenesis of eupnea. *Respir. Physiol. Neurobiol.* **143**, 321–332 (2004).
53. Janczewski, W. A., Onimaru, H., Homma, I. & Feldman, J. L. Opioid-resistant respiratory pathway from the preinspiratory neurones to abdominal muscles: *in vivo* and *in vitro* study in the newborn rat. *J. Physiol. (Lond.)* **545**, 1017–1026 (2002).
54. Takeda, S. *et al.* Opioid action on respiratory neuron activity of the isolated respiratory network in newborn rats. *Anesthesiology* **95**, 740–749 (2001).
55. Batini, C., Moruzzi, G., Palestini, M., Rossi, G. F. & Zanchetti, A. Persistent patterns of wakefulness in the pretectal midpontine preparation. *Science* **128**, 30–32 (1958).
56. McKay, L. C., Janczewski, W. A. & Feldman, J. L. Sleep-disordered breathing following targeted ablation of preBötzinger complex. *Nature Neurosci.* **8**, 1142–1144 (2005).
57. Wenninger, J. M. *et al.* Large lesions in the pre-Bötzinger complex area eliminate eupneic respiratory rhythm in awake goats. *J. Appl. Physiol.* **97**, 1629–1636 (2004).
58. Southall, D. P. *et al.* Prolonged expiratory apnoea: a disorder resulting in episodes of severe arterial hypoxaemia in infants and young children. *Lancet* **2**, 571–577 (1985).
59. Wilson, R. J., Vasilakos, K., Harris, M. B., Straus, C. & Remmers, J. E. Evidence that ventilatory rhythmogenesis in the frog involves two distinct neuronal oscillators. *J. Physiol. (Lond.)* **540**, 557–570 (2002).
60. Vasilakos, K., Wilson, R. J., Kimura, N. & Remmers, J. E. Ancient gill and lung oscillators may generate the respiratory rhythm of frogs and rats. *J. Neurobiol.* **62**, 369–385 (2004).
61. Owerkowicz, T., Farmer, C. G., Hicks, J. W. & Brainerd, E. L. Contribution of gular pumping to lung ventilation in monitor lizards. *Science* **284**, 1661–1663 (1999).
62. Podulka, S., Rohrbaugh, R. & Bonney, R. *Cornell Lab of Ornithology Handbook of Bird Biology* (Cornell Lab of Ornithology in association with Princeton Univ. Press, Ithaca, New York, 2005).
63. Jansen, A. H. & Chernick, V. Development of respiratory control. *Physiol. Rev.* **63**, 437–483 (1983).
64. Jacquin, T. D. *et al.* Reorganization of pontine rhythmic neuronal networks in *Krox-20* knockout mice. *Neuron* **17**, 747–758 (1996).
65. Csete, M. E. & Doyle, J. C. Reverse engineering of biological complexity. *Science* **295**, 1664–1669 (2002).
66. Maria, B. *et al.* Sleep breathing disorders in patients with idiopathic Parkinson's disease. *Respir. Med.* **97**, 1151–1157 (2003).
67. Stocchi, F., Barbato, L., Nordera, G., Berardelli, A. & Ruggieri, S. Sleep disorders in Parkinson's disease. *J. Neurol.* **245** (Suppl. 1), S15–S18 (1998).
68. Munschauer, F. E., Loh, L., Bannister, R. & Newsom-Davis, J. Abnormal respiration and sudden death during sleep in multiple system atrophy with autonomic failure. *Neurology* **40**, 677–679 (1990).
69. Vetrugno, R. *et al.* Sleep disorders in multiple system atrophy: a correlative video-polysomnographic study. *Sleep Med.* **5**, 21–30 (2004).
70. Arnulf, I. *et al.* Sleep disorders and diaphragmatic function in patients with amyotrophic lateral sclerosis. *Am. J. Respir. Crit. Care Med.* **161**, 849–856 (2000).
71. Barthlen, G. M. & Lange, D. J. Unexpectedly severe sleep and respiratory pathology in patients with amyotrophic lateral sclerosis. *Eur. J. Neurol.* **7**, 299–302 (2000).
72. Benarroch, E. E., Schmeichel, A. M., Low, P. A. & Parisi, J. E. Depletion of ventromedullary NK-1 receptor-immunoreactive neurons in multiple system atrophy. *Brain* **126**, 2183–2190 (2003).
73. Alexianu, M. E. *et al.* The role of calcium-binding proteins in selective motoneuron vulnerability in amyotrophic lateral sclerosis. *Ann. Neurol.* **36**, 846–858 (1994).
74. Alheid, G. F., Gray, P. A., Jiang, M. C., Feldman, J. L. & McCrimmon, D. R. Parvalbumin in respiratory neurons of the ventrolateral medulla of the adult rat. *J. Neurocytol.* **31**, 693–717 (2002).
75. Bixler, E. O., Vgontzas, A. N., Ten Have, T., Tyson, K. & Kales, A. Effects of age on sleep apnea in men: I. Prevalence and severity. *Am. J. Respir. Crit. Care Med.* **157**, 144–148 (1998).
76. Ancoli-Israel, S. *et al.* Morbidity, mortality and sleep-disordered breathing in community dwelling elderly. *Sleep* **19**, 277–282 (1996).
77. Johnson, S. M., Smith, J. C., Funk, G. D. & Feldman, J. L. Pacemaker behavior of respiratory neurons in medullary slices from neonatal rat. *J. Neurophysiol.* **72**, 2598–2608 (1994).
78. Del Negro, C. A., Koshiya, N., Butera, R. J. Jr & Smith, J. C. Persistent sodium current, membrane properties and bursting behavior of pre-Bötzinger complex inspiratory neurons *in vitro*. *J. Neurophysiol.* **88**, 2242–2250 (2002).
79. Ptak, K. *et al.* Sodium currents in medullary neurons isolated from the pre-Bötzinger complex region. *J. Neurosci.* **25**, 5159–5170 (2005).
80. Pagliardini, S., Adachi, T., Ren, J., Funk, G. D. & Greer, J. J. Fluorescent tagging of rhythmically active respiratory neurons within the pre-Bötzinger complex of rat medullary slice preparations. *J. Neurosci.* **25**, 2591–2596 (2005).
81. Del Negro, C. A. *et al.* Sodium and calcium dependent pacemaker neurons and respiratory rhythm generation. *J. Neurosci.* **25**, 446–453 (2005).
82. Pena, F., Parkis, M. A., Tryba, A. K. & Ramirez, J. M. Differential contribution of pacemaker properties to the generation of respiratory rhythms during normoxia and hypoxia. *Neuron* **43**, 105–117 (2004).
83. Del Negro, C. A., Morgado-Valle, C. & Feldman, J. L. Respiratory rhythm: an emergent network property? *Neuron* **34**, 821–830 (2002).
84. Rybak, I. A., Ptak, K., Shevtsova, N. A. & McCrimmon, D. R. Sodium currents in neurons from the rostroventrolateral medulla of the rat. *J. Neurophysiol.* **90**, 1635–1642 (2003).
85. Pena, F. & Ramirez, J. M. Substance P-mediated modulation of pacemaker properties in the mammalian respiratory network. *J. Neurosci.* **24**, 7549–7556 (2004).
86. Ramirez, J. M., Tryba, A. K. & Pena, F. Pacemaker neurons and neuronal networks: an integrative view. *Curr. Opin. Neurobiol.* **14**, 665–674 (2004).
87. Rekling, J. C., Champagnat, J. & Denavit-Saubie, M. Electroresponsive properties and membrane potential trajectories of three types of inspiratory neurons in the newborn mouse brain stem *in vitro*. *J. Neurophysiol.* **75**, 795–810 (1996).
88. Camazine, S. *et al.* *Self-organization in Biological Systems* 538 (Princeton Univ. Press, Princeton, New Jersey, 2001).
89. Morgado-Valle, C. & Feldman, J. L. Depletion of substance P and glutamate by capsazepine blocks respiratory rhythm in neonatal rat *in vitro*. *J. Physiol. (Lond.)* **555**, 783–792 (2004).
90. Ptak, K. *et al.* The murine neurokinin NK1 receptor gene contributes to the adult hypoxic facilitation of ventilation. *Eur. J. Neurosci.* **16**, 2245–2252 (2002).
91. Frermann, D., Keller, B. U. & Richter, D. W. Calcium oscillations in rhythmically active respiratory neurones in the brainstem of the mouse. *J. Physiol. (Lond.)* **515**, 119–131 (1999).
92. Koshiya, N. & Smith, J. C. Neuronal pacemaker for breathing visualized *in vitro*. *Nature* **400**, 360–363 (1999).
93. Onimaru, H., Ballanyi, K. & Richter, D. W. Calcium-dependent responses in neurons of the isolated respiratory network of newborn rats. *J. Physiol. (Lond.)* **491**, 677–695 (1996).
94. Pierrefiche, O., Champagnat, J. & Richter, D. W. Calcium-dependent conductances control neurones involved in termination of inspiration in cats. *Neurosci. Lett.* **184**, 101–104 (1995).
95. Pierrefiche, O., Haji, A., Bischoff, A. & Richter, D. W. Calcium currents in respiratory neurons of the cat *in vivo*. *Pflügers Arch.* **438**, 817–826 (1999).
96. Mironov, S. L. & Richter, D. W. Hypoxic modulation of L-type Ca²⁺ channels in inspiratory brainstem neurones: intracellular signalling pathways and metabotropic glutamate receptors. *Brain Res.* **869**, 166–177 (2000).
97. Busselberg, D., Bischoff, A. M., Becker, K., Becker, C. M. & Richter, D. W. The respiratory rhythm in mutant oscillator mice. *Neurosci. Lett.* **316**, 99–102 (2001).
98. Liu, Y. Y. *et al.* GABAergic and glycinergic synapses onto neurokinin-1 receptor-immunoreactive neurons in the pre-Bötzinger complex of rats: light and electron microscopic studies. *Eur. J. Neurosci.* **16**, 1058–1066 (2002).

99. Ballerini, L., Bracci, E. & Nistri, A. Pharmacological block of the electrogenic sodium pump disrupts rhythmic bursting induced by strychnine and bicuculline in the neonatal rat spinal cord. *J. Neurophysiol.* **77**, 17–23 (1997).
100. Darbon, P., Tschertner, A., Yvon, C. & Streit, J. The role of the electrogenic Na/K pump in disinhibition-induced bursting in cultured spinal networks. *J. Neurophysiol.* **90**, 3119–3129 (2003).
101. Stauffer, D. & Aharony, A. *Introduction to Percolation Theory* 181 (Taylor & Francis, London, 1992).
102. Barabasi, A.-L. *Linked: The New Science of Networks* 280 (Perseus, Cambridge, Massachusetts, 2002).
103. Newman, M. E. The structure and function of complex networks. *SIAM Review* **45**, 167–256 (2003).
104. Watts, D. J. *Six Degrees: The Science of a Connected Age* 368 (Norton, New York, 2003).
105. Callaway, E. M. A molecular and genetic arsenal for systems neuroscience. *Trends. Neurosci.* **28**, 196–201 (2005).
106. Slimko, E. M. & Lester, H. A. Codon optimization of *Caenorhabditis elegans* GluCl ion channel genes for mammalian cells dramatically improves expression levels. *J. Neurosci. Methods* **124**, 75–81 (2003).
107. Slimko, E. M., McKinney, S., Anderson, D. J., Davidson, N. & Lester, H. A. Selective electrical silencing of mammalian neurons *in vitro* by the use of invertebrate ligand-gated chloride channels. *J. Neurosci.* **22**, 7373–7379 (2002).
108. McCrimmon, D. R., Alheid, G. F., Jiang, M., Calandriello, T. & Topgi, A. Converging functional and anatomical evidence for novel brainstem respiratory compartments in the rat. *Adv. Exp. Med. Biol.* **551**, 101–105 (2004).

Acknowledgments

The authors thank G. F. Alheid and D. R. McCrimmon of Northwestern University, Illinois, USA, for the figures and for editing the text in BOX 2. We thank our colleagues in the Systems Neurobiology Laboratory at the University of California, Los Angeles, USA, for their incisive comments on earlier versions of this manuscript. This work was supported by grants from the National Institutes of Health, USA, the Jeffress Memorial Trust, Richmond, Virginia, USA, and the Parker B. Francis Fellowship in Pulmonary Research, Parker B. Francis Foundation, Kansas City, Missouri, USA.

Competing interests statement

The authors declare no competing financial interests.

DATABASES

The following terms in this article are linked online to:

OMIM: <http://www.ncbi.nlm.nih.gov/entrez/query.fcgi?db=OMIM>

Myotrophic lateral sclerosis | Congenital central hypoventilation syndrome | Parkinson's disease | Rett syndrome | Sudden infant death syndrome

Access to this interactive links box is free online.

disorders that combine emotional and motor components, such as autism, schizophrenia and Huntington's disease.

Studying the neurobiology of EBL is particularly timely because the topic introduces a new and biologically realistic context to what has already been learned about human emotion from isolated facial expressions during the past two decades. EBL consists of an emotion expressed in the whole body, comprising coordinated movements and often a meaningful action, and so prompts research to go beyond facial expressions and to consider issues of perception of movement and action, which have so far been researched in isolation and not specifically related to perception of EBL.

After discussing why the role of the body is important in understanding emotion and communication, I describe research on perceptual similarities in the neuroanatomy and temporal dynamics between face and body perception, and conclude that recognition of facial expressions is strongly influenced by EBL. First, I ask why seeing emotional bodies automatically transmits the emotion and I relate this question to the combined presence of emotions, movement and actions. Next, I review dissociations between these different aspects in some clinical populations, including the role of deliberate processes and consciousness. Finally, I suggest an integrated framework for research on EBL perception and discuss key outstanding questions.

History of emotional body language

There is considerable history associated with the link between emotion and behaviour⁶, and the relationship between emotion and whole-body action was at the centre of the pioneering work of Bulwer⁷, Bell⁸, Gratiolet⁹ and Duchène de Boulogne¹⁰, culminating in Darwin's evolutionary approach to emotions and their bodily expressions¹¹. In a radical departure from the Cartesian view of emotions as private mental episodes, Darwin argued that emotions are adaptive in the sense that they prompt an action that is beneficial to the organism, given its environmental circumstances. Darwin described the body expressions (for example, EBL, vocalizations and facial expressions) associated with emotions in animals and humans, with a particular emphasis on the link between emotion and action^{6,12}, and highlighted the roots of facial expressions in adaptive actions¹³. So, a species' ability to produce and perceive some basic categories of EBL is an integral part of its phylogenetic history.

OPINION

Towards the neurobiology of emotional body language

Beatrice de Gelder

Abstract | People's faces show fear in many different circumstances. However, when people are terrified, as well as showing emotion, they run for cover. When we see a bodily expression of emotion, we immediately know what specific action is associated with a particular emotion, leaving little need for interpretation of the signal, as is the case for facial expressions. Research on emotional body language is rapidly emerging as a new field in cognitive and affective neuroscience. This article reviews how whole-body signals are automatically perceived and understood, and their role in emotional communication and decision-making.

What do body positions and movement reveal about emotions? From everyday experience we know that an angry face is more menacing when accompanied by a fist, and a fearful face more worrisome when the person is in flight (that is, running away). When a frightening event occurs, there might not be time to look for the fearful contortions in an individual's face, but a quick glance at the body may tell us all we need to know. This article reviews what has been discovered so far and provides a framework for the interpretation of and further investigation of emotional body language (EBL).

Many valuable insights into human emotion and its neurobiological bases have been obtained from the study of facial expressions.

By comparison, the neurobiological bases of EBL are relatively unexplored^{1–5}. Human and non-human primates are especially sensitive to the gestural signals made by other primates, and use these signals as guides for their own behaviour. Fearful faces signal a threat, but do not provide information about either the source of the threat or the best way to deal with it. By contrast, fearful body positions signal a threat and at the same time specify the action undertaken by the individuals fearing for their safety. Unravelling these behavioural aspects brings emotion researchers closer to the evolutionary link between emotion and behaviour and the phylogenetic continuity of emotion–action circuitry across species. It also sheds light on